

BDT10

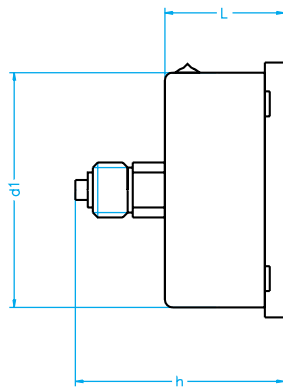


fillable pressure gauge with bayonet bezel

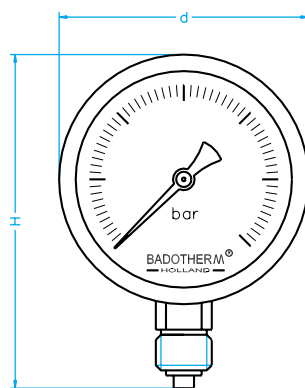
model	ø 50/63mm	ø 80mm	ø 100/160mm
BDT10/A with bottom connection	bottom		
BDT10/D with back connection	centre back	centre back	eccentric back
standard features			
case with bayonet bezel	stainless steel		
bourdon tube system	brass		
blow-out disk	-	-	NBR
window	plexiglas	glass	glass
range in bar or equivalent	-1/0 0/400		
thread bsp - npt - bspt	1/4"	1/4"	1/2"
filling	glycerine		
max. process temperature	60 °C		
accuracy at 20 °C	1,6 %		

options	ø 50mm	ø 63mm	ø 80mm	ø 100mm	160mm
back flange for wall mounting	n	BDT10/C	BDT10/C	BDT10/C	BDT10/C
U-bracket for panel mounting	n	BDT10/B	BDT10/B	BDT10/B	BDT10/B
front flange for panel mounting	n	BDT10/E	BDT10/E	BDT10/E	BDT10/E
glass window	a	a	s	s	s
plexiglas window	s	s	a	a	a
glycerine filling	a	a	a	a	a
silicon filling	a	a	a	a	a
red pointer on dial	a	a	a	a	a
reducing nipple for 1/2" connection	a	a	a	n	n
brass restrictor in connection	s	s	a	a	a
non standard thread	a	a	a	a	a
non standard dial	a	a	a	a	a

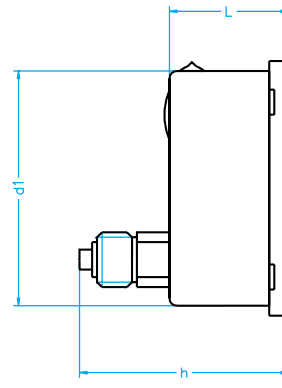
a = available as option; n = not available; s = standard in execution



type D ø 50/63/80mm



type A



type D ø 100/160mm

measurements	ø 50mm	ø 63mm	ø 80mm	ø 100mm	ø 160mm
d in mm	56	67	88	110	160
d1 in mm	51	63	80	100	149
L in mm	30	30	30	47	50
H in mm	75	87	114	140	198
h in mm	52	52	55	89	92
weight in kg	0,15	0,20	0,30	0,60	1,02

dimensions are approximate and can be changed without prior notice