

# BDT13 - DPG

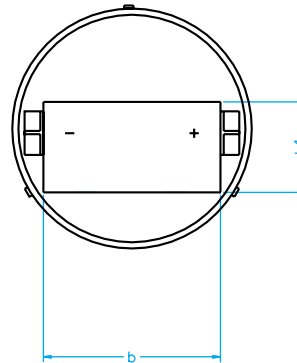
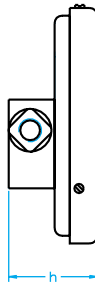
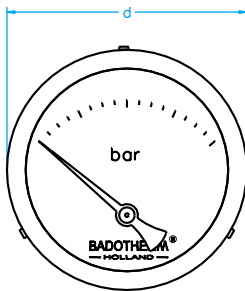


## piston differential pressure gauge

model	∅ 50/63mm	∅ 80/100mm	∅ 150mm
BDT13 - DPG with inline connection	inline		
standard features			
case	stainless steel IP65		
body	aluminium		
piston system	stainless steel		
window	glass		
ranges in bar	0/0,25 0/0,50 0/0,75 0/1 0/2 0/3 0/4 0/7 0/10		
thread npt female	1/4"		
max. process temperature	80 °C		
accuracy at 20°C	2,0 %		
static pressure	200 bar		
wetted parts	PTFE, SS304 spring and screw, ceramic magnet		
seals	bunaN		
clean fluid applications			

options	∅ 50/63mm	∅ 80/100mm	∅ 150mm
flush panel mounting	a	a	a
glycerine filling	a	n	n
body stainless steel	a	a	a
body brass	a	a	a
with 1 reed contact (SPST)	a	a	a
with 2 reed contacts (SPST)	a	a	a
with 1 reed contact (SPDT)	a	a	a
seals Viton	a	a	a
non standard thread	a	a	a

a = available as option; n = not available



measurements	∅ 50mm	∅ 63mm	∅ 80mm	∅ 100mm	∅ 150mm
d in mm	53	66	83	104,3	154,3
h in mm	43	44	44	44	44
b in mm	76	76	76	76	76
b1 in mm	50	50	50	50	50
weight in kg	0,32	0,35	0,39	0,40	0,64

dimensions are approximate and can be changed without prior notice