

BDT18

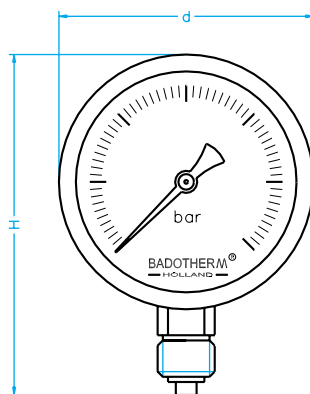
fillable stainless steel pressure gauge



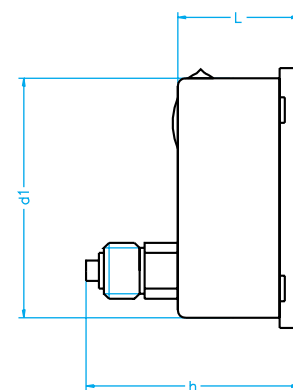
| model | ø 80mm | ø 100mm | ø 160mm |
|--------------------------------|-----------------|------------------|------------------|
| BDT18/A with bottom connection | | bottom | |
| BDT18/D with back connection | | eccentric back | |
| standard features | | | |
| case with bayonet bezel | | stainless steel | |
| bourdon tube system | | stainless steel | |
| blow-out disk | | NBR | NBR |
| window | glass | safety glass | safety glass |
| range in bar or equivalent | -1/0 0/700 | -1/0 0/1000 | -1/0 0/1000 |
| thread bsp - npt - bspt | 1/4" | 1/2" | 1/2" |
| max. process temperature | | 400°C | |
| accuracy at 20 °C | 1,6 % | 1,0 % | 1,0 % |

| options | ø 80mm | ø 100mm | ø 160mm |
|---|---------|---------|---------|
| back flange for wall mounting | BDT18/C | BDT18/C | BDT18/C |
| U-bracket for panel mounting | BDT18/B | BDT18/B | BDT18/B |
| front flange for panel mounting | BDT18/E | BDT18/E | BDT18/E |
| case with bayonet AISI 316 | n | a | a |
| safety glass window | a | s | s |
| plexiglas window | a | a | a |
| glass window | s | a | a |
| glycerine filling | a | a | a |
| silicon filling | a | a | a |
| wetted parts monel K400 | n | a | a |
| red pointer on dial | a | a | a |
| adjustable pointer with slotted bush | a | a | a |
| reducer nipple for 1/2" connection | a | n | n |
| restrictor in connection | a | a | a |
| non standard thread | a | a | a |
| non standard dial | a | a | a |
| range 1600/2500/4000 bar | n | n | a |
| duplex bourdon tube system (2 pointers) | n | a | a |

a = available as option; n = not available; s = standard in execution



type A



type D

| measurements | ø 80mm | ø 100mm | ø 160mm |
|--------------|--------|---------|---------|
| d in mm | 89 | 110 | 160 |
| d1 in mm | 80 | 100 | 149 |
| L in mm | 32 | 49 | 50 |
| H in mm | 114 | 140 | 198 |
| h in mm | 55 | 89 | 92 |
| weight in kg | 0,30 | 0,53 | 1,02 |

dimensions are approximate and can be changed without prior notice