

BDT18



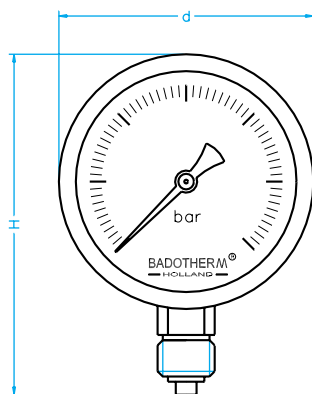
fillable stainless steel pressure gauge

model	ø 50mm	ø 63mm
BDT18/A with bottom connection		bottom
BDT18/D with back connection	centre back*	eccentric back
standard features		
case with bayonet bezel		stainless steel
bourdon tube system		stainless steel
window		plexiglas
range in bar or equivalent		-1/0 0/400
thread bsp - npt - bspt		1/4"
max. process temperature		400 °C
accuracy at 20 °C		1,6 %

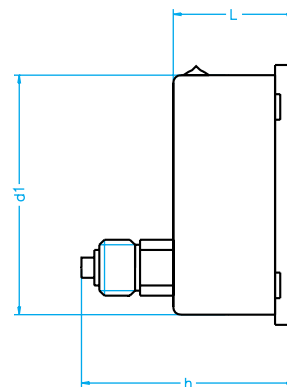
*not fillable

options	ø 50mm	ø 63mm
back flange for wall mounting	n	BDT18/C
U-bracket for panel mounting	n	BDT18/B
front flange for panel mounting	n	BDT18/E
case with bayonet AISI 316	a	a
safety glass window	a	a
glass window	a	a
glycerine filling	a	a
silicone filling	a	a
adjustable pointer with slotted bush	n	a
red pointer on dial	a	a
restrictor in connection	a	a
non standard thread	a	a
non standard dial	a	a

a = available as option; n = not available



type A



type D ø 63mm

measurements	ø 50mm	ø 63mm
d in mm	56	68
d1 in mm	51	63
L in mm	30	30
H in mm	75	87
h in mm	52	58
weight in kg	0,10	0,14

dimensions are approximate and can be changed without prior notice