

BDT20

fillable “solid front” pressure gauge

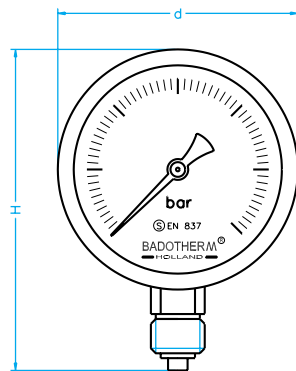
| model | ø 100mm | ø 160mm |
|--------------------------------|---------|------------------------------|
| BDT20/A with bottom connection | | bottom |
| BDT20/D with back connection | | eccentric back |
| standard features | | |
| case and bayonet bezel | | stainless steel |
| bourdon tube system | | stainless steel |
| full blow-out back | | incl. baffle wall |
| pointer | | adjustable with slotted bush |
| window | | safety glass |
| range in bar or equivalent | | -1/0 0/600 |
| thread bsp - npt - bspt | | 1/2" |
| max. process temperature | | 200 °C |
| accuracy at 20 °C | | 1,0 % |



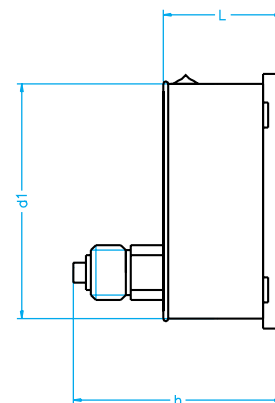
| options | ø 100mm | ø 160mm |
|-------------------------------|---------|---------|
| back flange for wall mounting | BDT20/C | BDT20/C |
| case and bezel AISI 316 | a | a |
| glycerine filling | a* | a* |
| silicone filling | a* | a* |
| micro adjustable pointer | a | a |
| red pointer on dial | a | a |
| wetted parts monel K400 | a | a |
| accuracy 0,5% at 20 °C | a | a |
| restrictor in connection | a | a |
| non standard thread | a | a |
| non standard dial | a | a |
| range 1000 bar | a | a |

a = available as option; n = not available

* not possible with BDT20/D



type A



type D

| measurements | ø 100mm | ø 160mm |
|--------------|---------|---------|
| d in mm | 110 | 160 |
| d1 in mm | 100 | 149 |
| L in mm | 61 | 64 |
| H in mm | 142 | 200 |
| h in mm | 104 | 107 |
| weight in kg | 0,65 | 1,20 |

dimensions are approximate and can be changed without prior notice